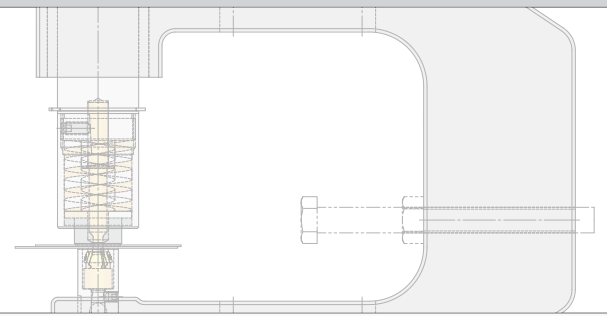
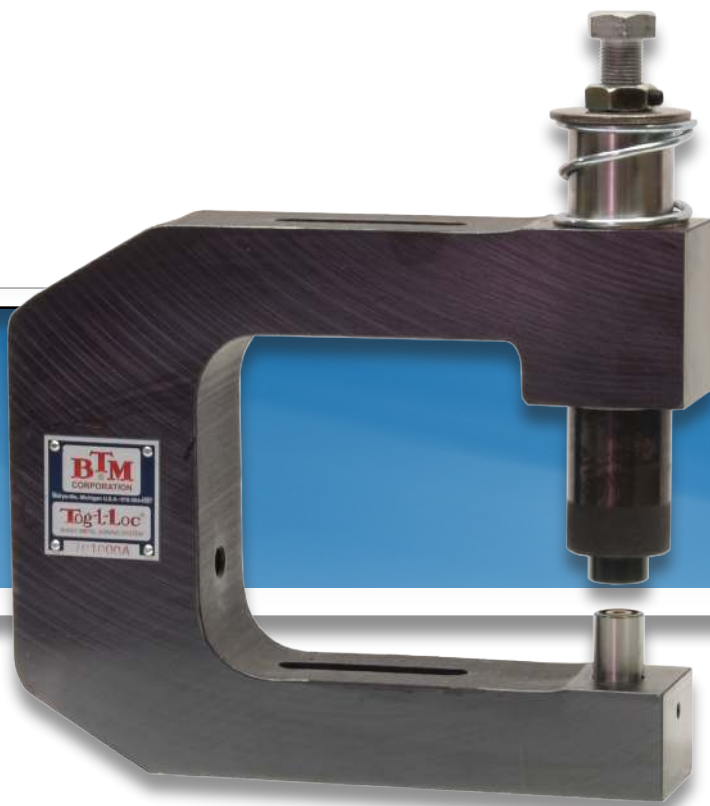


# Press Brake Tooling

For use with Tog-L-Loc® Sheet Metal Clinching



BTM's unitized press brake tooling is a cost-effective method to utilize the Tog-L-Loc® sheet metal joining system. Available in a range of throat depths, these units are shipped ready to install into your brake.

# BTM<sup>®</sup>

[www.BTM-Europe.com](http://www.BTM-Europe.com)

810-364-4567



# PRESS BRAKE CATALOG

## Compatible Tooling

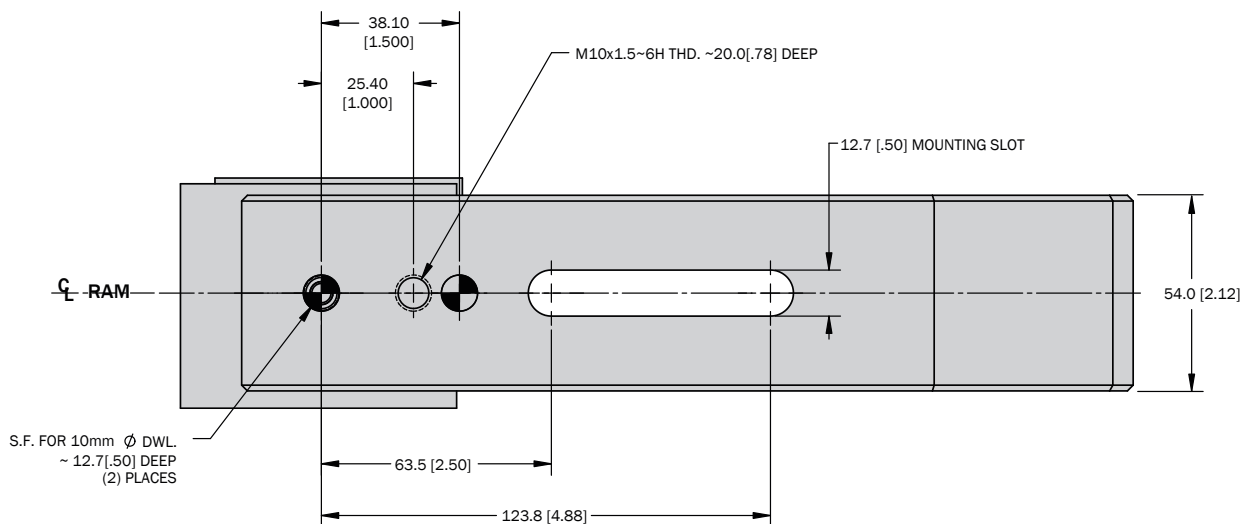
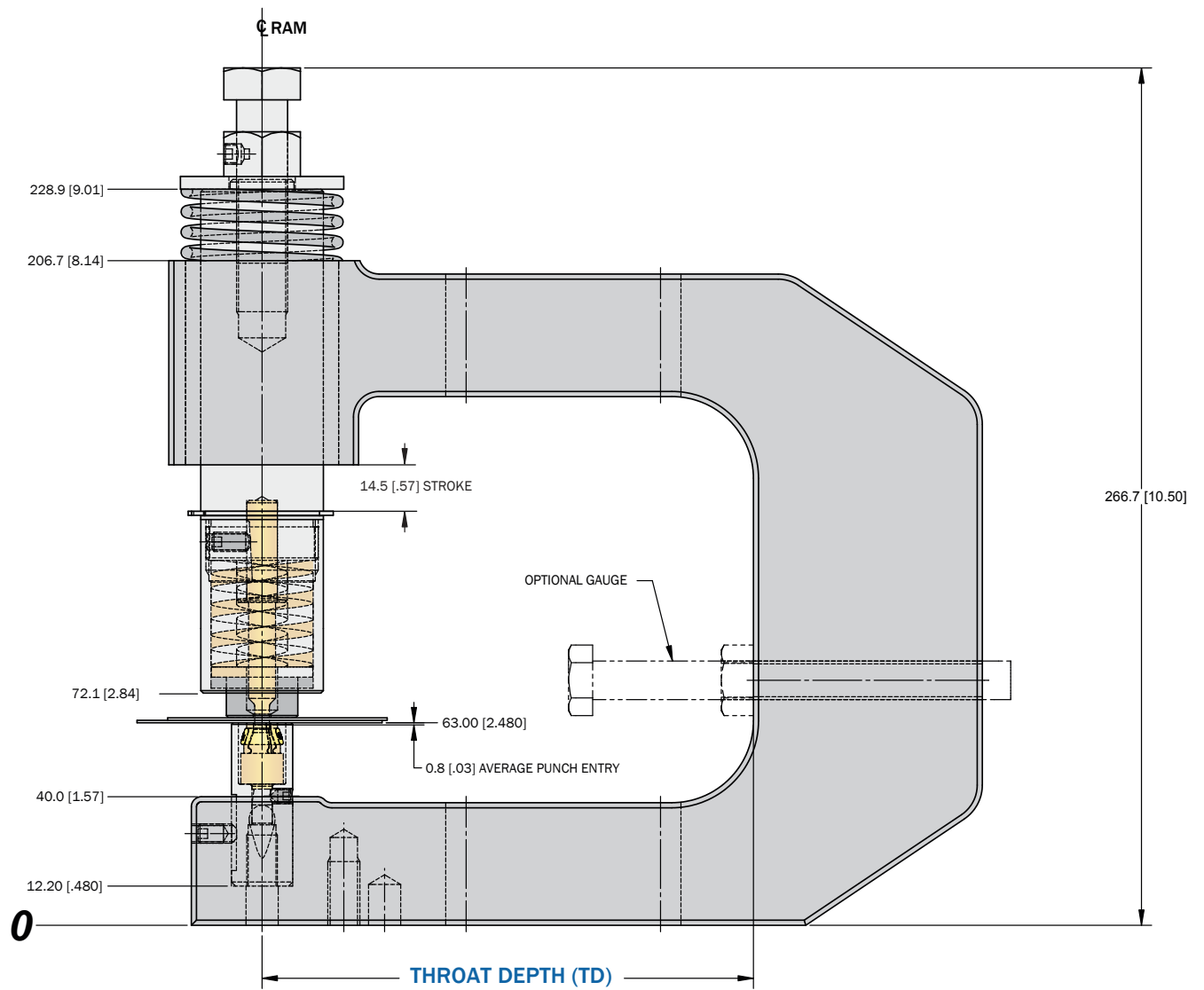
3 Blade Elastomer Style "A" Die		Whistle Notch Flat (WNF) Punch																					
<table border="1"> <thead> <tr> <th colspan="2">4.6 Tog-L-Loc Die</th> </tr> <tr> <th>Anvil Depth</th> <th>BTM No.</th> </tr> </thead> <tr> <td>0.51 [.020]</td> <td>003933</td> </tr> <tr> <td>0.64 [.025]</td> <td>003940</td> </tr> <tr> <td>0.76 [.030]</td> <td>003947</td> </tr> <tr> <td>0.89 [.035]</td> <td>003954</td> </tr> <tr> <td>1.02 [.040]</td> <td>003961</td> </tr> <tr> <td>1.14 [.045]</td> <td>003969</td> </tr> <tr> <td>1.27 [.050]</td> <td>003977</td> </tr> <tr> <td>1.40 [.055]</td> <td>004037</td> </tr> <tr> <td>1.52 [.060]</td> <td>006601</td> </tr> </table>		4.6 Tog-L-Loc Die		Anvil Depth	BTM No.	0.51 [.020]	003933	0.64 [.025]	003940	0.76 [.030]	003947	0.89 [.035]	003954	1.02 [.040]	003961	1.14 [.045]	003969	1.27 [.050]	003977	1.40 [.055]	004037	1.52 [.060]	006601
4.6 Tog-L-Loc Die																							
Anvil Depth	BTM No.																						
0.51 [.020]	003933																						
0.64 [.025]	003940																						
0.76 [.030]	003947																						
0.89 [.035]	003954																						
1.02 [.040]	003961																						
1.14 [.045]	003969																						
1.27 [.050]	003977																						
1.40 [.055]	004037																						
1.52 [.060]	006601																						

 | 4.6 Tog-L-Loc Punch |         | |---------------------|---------| | Punch Tip Radius    | BTM No. | | 0.25 [.010]         | 002798  | | 0.51 [.020]         | 002992  | | |

The correct Anvil Depth and Punch Tip Radius are determined through testing and/or by surrogate joint data at BTM. Contact a BTM sales application engineer to determine the correct tooling for your application.

## Ordering Information

"TD"	BTM No.
152mm [6"]	701000A
254mm [10"]	701000B
356mm [14"]	701000C





# PRESS BRAKE CATALOG

## Compatible Tooling

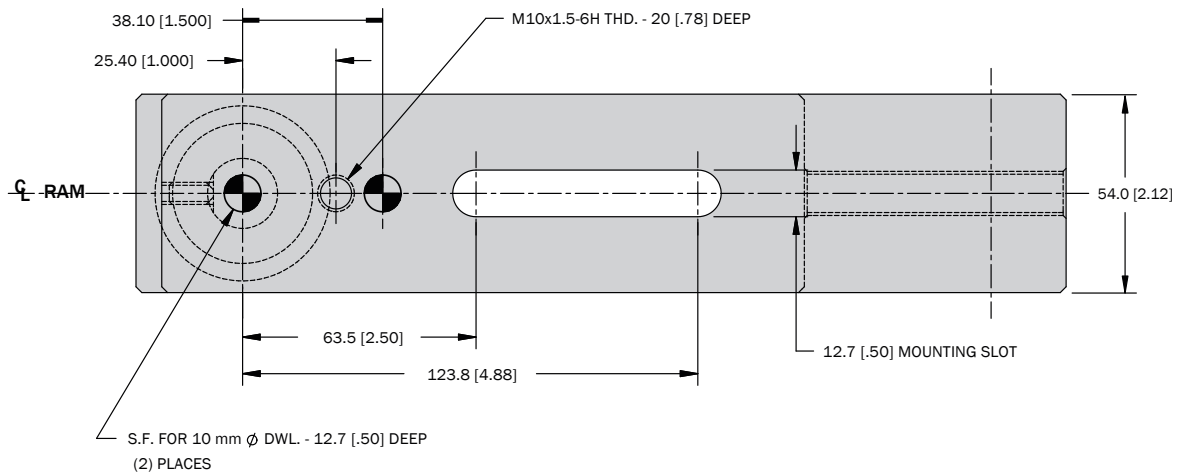
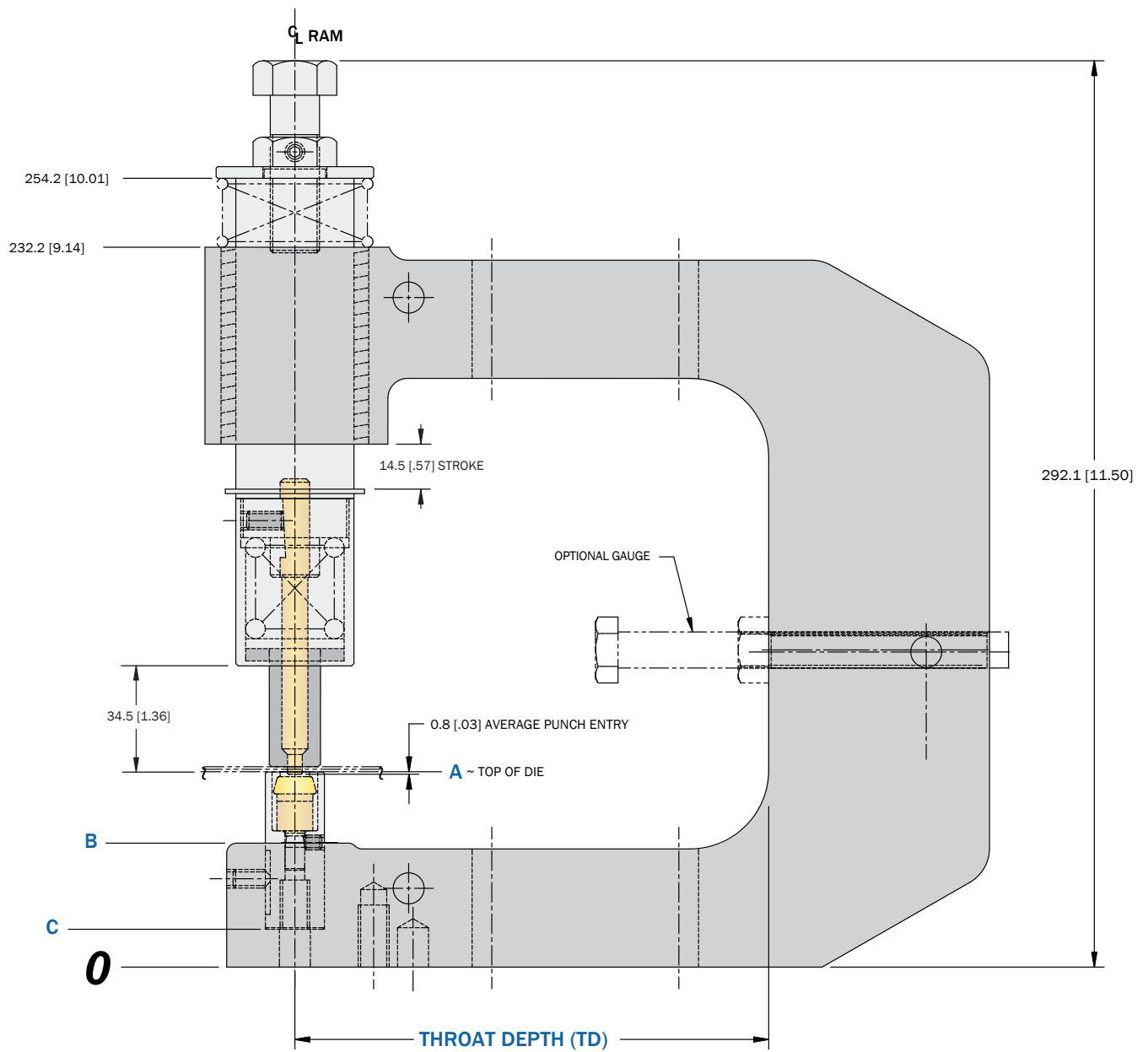
3 Blade Elastomer Style "A" Die		Whistle Notch Flat (WNF) Punch																					
<table border="1"> <thead> <tr> <th colspan="2">4.6 Tog-L-Loc Die</th> </tr> <tr> <th>Anvil Depth</th> <th>BTM No.</th> </tr> </thead> <tr> <td>0.51 [.020]</td> <td>003933</td> </tr> <tr> <td>0.64 [.025]</td> <td>003940</td> </tr> <tr> <td>0.76 [.030]</td> <td>003947</td> </tr> <tr> <td>0.89 [.035]</td> <td>003954</td> </tr> <tr> <td>1.02 [.040]</td> <td>003961</td> </tr> <tr> <td>1.14 [.045]</td> <td>003969</td> </tr> <tr> <td>1.27 [.050]</td> <td>003977</td> </tr> <tr> <td>1.40 [.055]</td> <td>004037</td> </tr> <tr> <td>1.52 [.060]</td> <td>006601</td> </tr> </table>		4.6 Tog-L-Loc Die		Anvil Depth	BTM No.	0.51 [.020]	003933	0.64 [.025]	003940	0.76 [.030]	003947	0.89 [.035]	003954	1.02 [.040]	003961	1.14 [.045]	003969	1.27 [.050]	003977	1.40 [.055]	004037	1.52 [.060]	006601
4.6 Tog-L-Loc Die																							
Anvil Depth	BTM No.																						
0.51 [.020]	003933																						
0.64 [.025]	003940																						
0.76 [.030]	003947																						
0.89 [.035]	003954																						
1.02 [.040]	003961																						
1.14 [.045]	003969																						
1.27 [.050]	003977																						
1.40 [.055]	004037																						
1.52 [.060]	006601																						

 | 4.6 Tog-L-Loc Punch |         | |---------------------|---------| | Punch Tip Radius    | BTM No. | | 0.25 [.010]         | 006624  | | 0.51 [.020]         | 006636  | | |

The correct Anvil Depth and Punch Tip Radius are determined through testing and/or by surrogate joint data at BTM. Contact a BTM sales application engineer to determine the correct tooling for your application.

## Ordering Information

"TD"	"A"	"B"	"C"	BTM No.
152mm [6"]	63.00 [2.480]	40.0 [1.57]	12.20 [.480]	701000D
356mm [14"]	63.00 [2.480]	40.0 [1.57]	12.20 [.480]	701000F
457mm [18"]	88.39 [3.480]	65.3 [2.57]	37.59 [1.480]	701000G
610mm [24"]	88.39 [3.480]	65.3 [2.57]	37.59 [1.480]	701000H





# PRESS BRAKE CATALOG

## Compatible Tooling

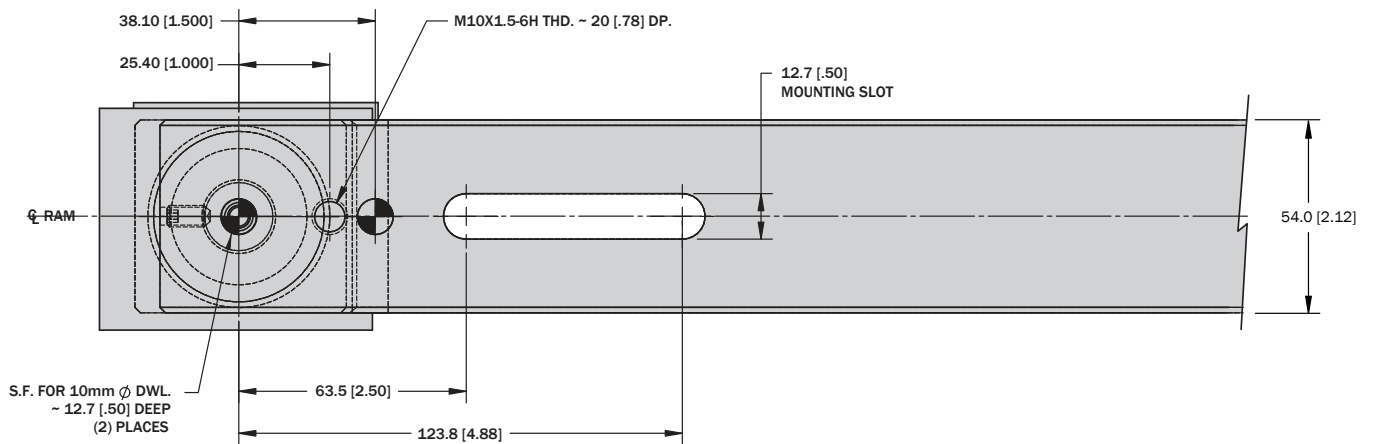
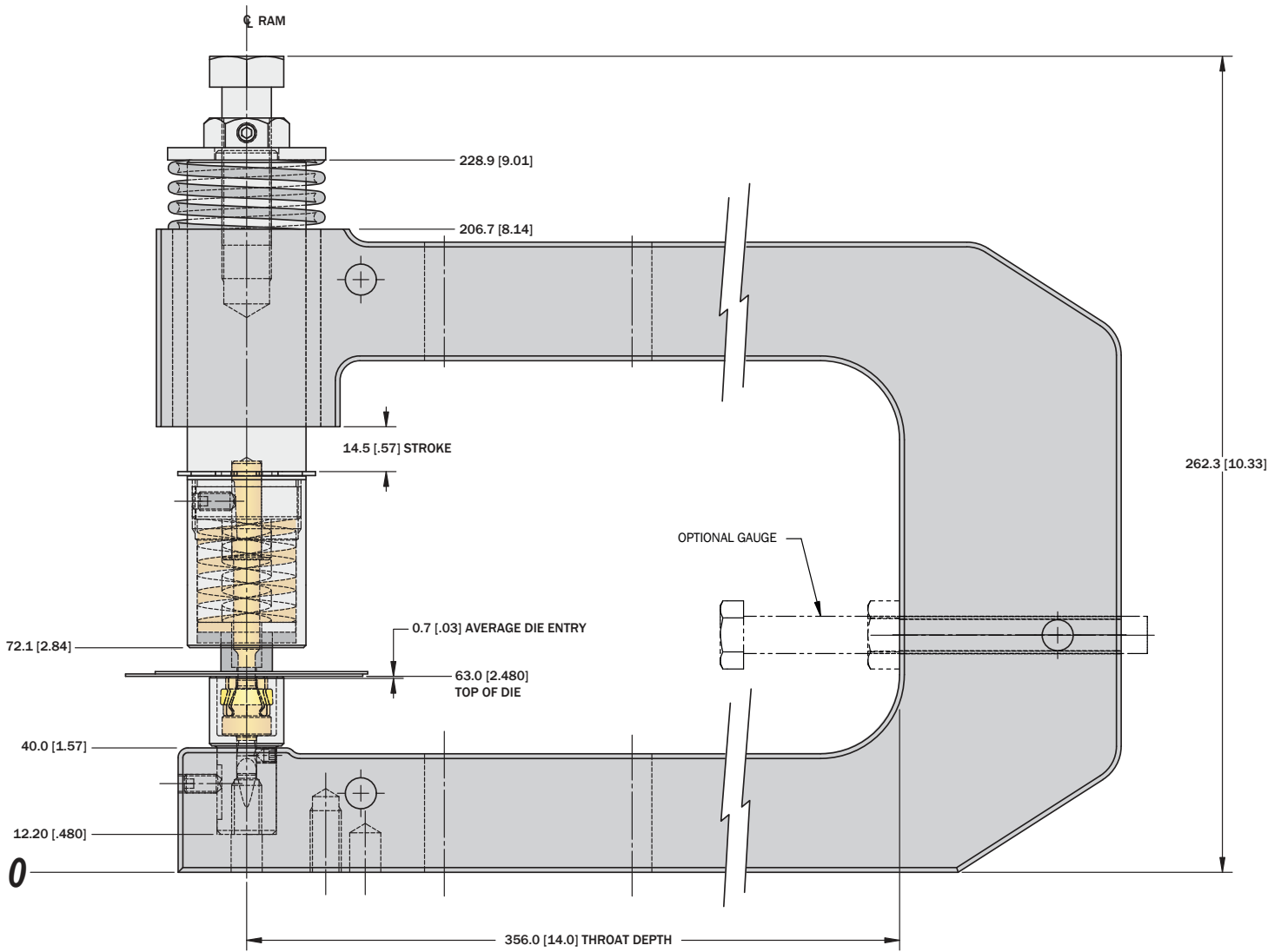
3 Blade Elastomer Style "A" Die		Whistle Notch Flat (WNF) Punch																							
<table border="1"> <thead> <tr> <th colspan="2">5.5 Tog-L-Loc Die</th> </tr> <tr> <th>Anvil Depth</th> <th>BTM No.</th> </tr> </thead> <tr> <td>0.64 [.025]</td> <td>739100B</td> </tr> <tr> <td>0.76 [.030]</td> <td>739100C</td> </tr> <tr> <td>0.89 [.035]</td> <td>739100D</td> </tr> <tr> <td>1.02 [.040]</td> <td>739100E</td> </tr> <tr> <td>1.14 [.045]</td> <td>739100F</td> </tr> <tr> <td>1.27 [.050]</td> <td>739100G</td> </tr> <tr> <td>1.40 [.055]</td> <td>739100H</td> </tr> <tr> <td>1.52 [.060]</td> <td>739100J</td> </tr> <tr> <td>1.65 [.065]</td> <td>739100K</td> </tr> <tr> <td>1.78 [.070]</td> <td>739100L</td> </tr> </table>		5.5 Tog-L-Loc Die		Anvil Depth	BTM No.	0.64 [.025]	739100B	0.76 [.030]	739100C	0.89 [.035]	739100D	1.02 [.040]	739100E	1.14 [.045]	739100F	1.27 [.050]	739100G	1.40 [.055]	739100H	1.52 [.060]	739100J	1.65 [.065]	739100K	1.78 [.070]	739100L
5.5 Tog-L-Loc Die																									
Anvil Depth	BTM No.																								
0.64 [.025]	739100B																								
0.76 [.030]	739100C																								
0.89 [.035]	739100D																								
1.02 [.040]	739100E																								
1.14 [.045]	739100F																								
1.27 [.050]	739100G																								
1.40 [.055]	739100H																								
1.52 [.060]	739100J																								
1.65 [.065]	739100K																								
1.78 [.070]	739100L																								

 | 5.5 Tog-L-Loc Punch |         | |---------------------|---------| | Punch Tip Radius    | BTM No. | | 0.25 [.010]         | 018934  | | 0.51 [.020]         | 018935  | | |

The correct Anvil Depth and Punch Tip Radius are determined through testing and/or by surrogate joint data at BTM. Contact a BTM sales application engineer to determine the correct tooling for your application.

## Ordering Information

"TD"	BTM No.
356mm [14"]	785600C



# BTM<sup>®</sup> CORPORATION

BTM has a wide range of products to meet your needs including:

## PNEUMATIC CLAMPS & GRIPPERS

### Light & Heavy Duty Clamps

Clamps range from light duty omni-directional head clamps to heavy duty precision sealed power clamps.



### Light & Heavy Duty Grippers

BTM's Gripper line ranges from compact light duty models to locking & non-locking heavy duty models.



## PIN PRODUCTS

### Precision Shot Pin cylinders

BTM's Precision Part Locators are used whenever your production needs require locating precise holes in a workpiece.



### Pin Locator Clamps

BTM's Pin Locator Clamps and Single Finger clamps are used in stationary part nests, welding fixtures, transfer systems, robot end effectors and numerous other clamping applications. These clamps locate and hold the work while other operations are performed.



Standard pin sizes range from 12.5mm - 40mm.

## SHEET METAL JOINING

### Tog-L-Loc<sup>®</sup>

BTM's Tog-L-Loc<sup>®</sup> sheet metal joining system is a cold forming process that quickly joins pre-painted, galvanized, coated, and dissimilar metals.



[WWW.TOG-L-LOC.COM](http://WWW.TOG-L-LOC.COM)

### Lance-N-Loc<sup>®</sup>

BTM's Lance-N-Loc<sup>®</sup> Joining System produces clean, strong and consistent joints in most coated or uncoated metals.



### Ways to Tog-L-Loc<sup>®</sup>



Press Brakes



Handheld Units



Die Sets



Universal Presses



Hydraulic Units



Specialized Units

For more information, or to see our full line of products, please visit:

[WWW.BTMCORP.COM](http://WWW.BTMCORP.COM)